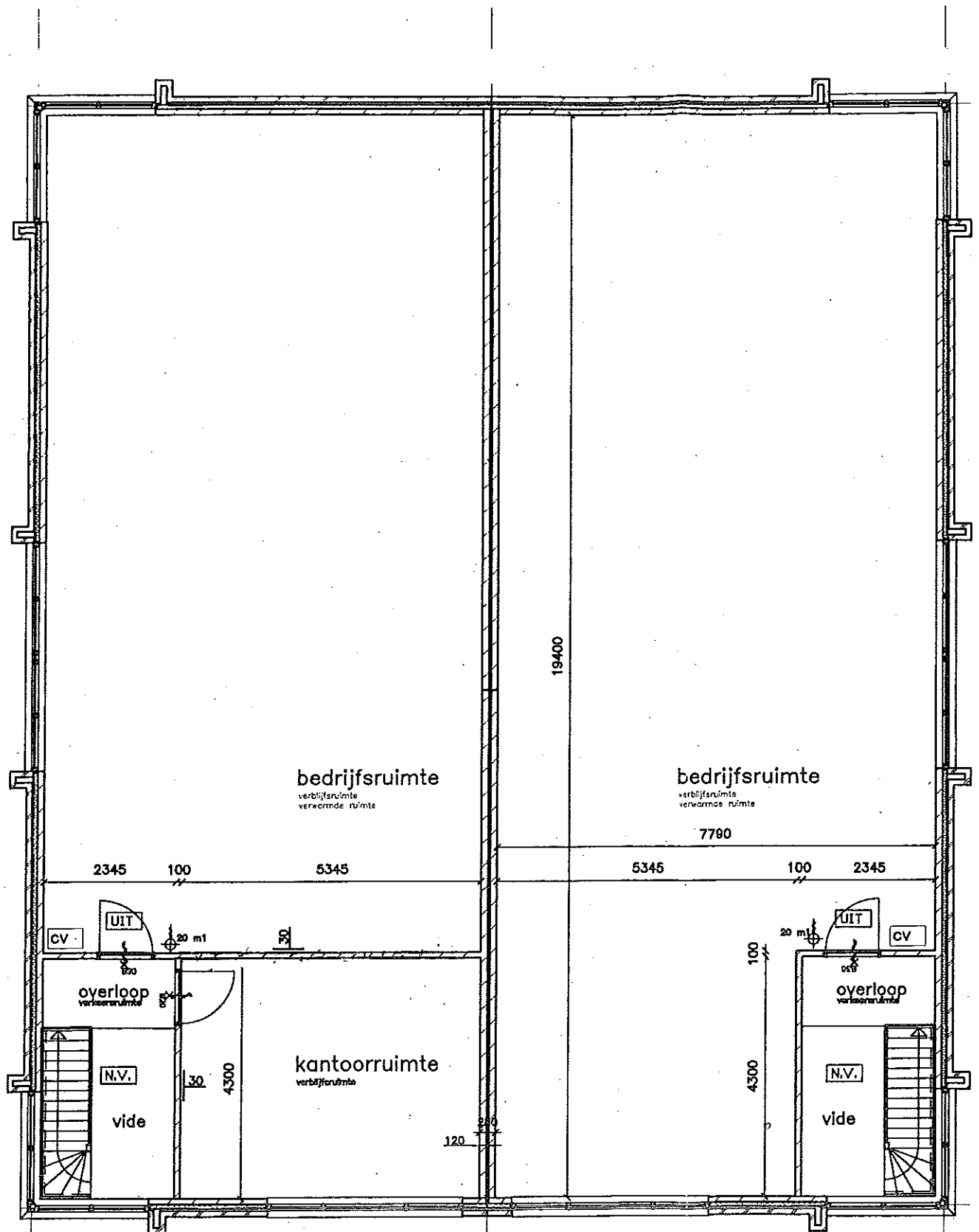


begane grond



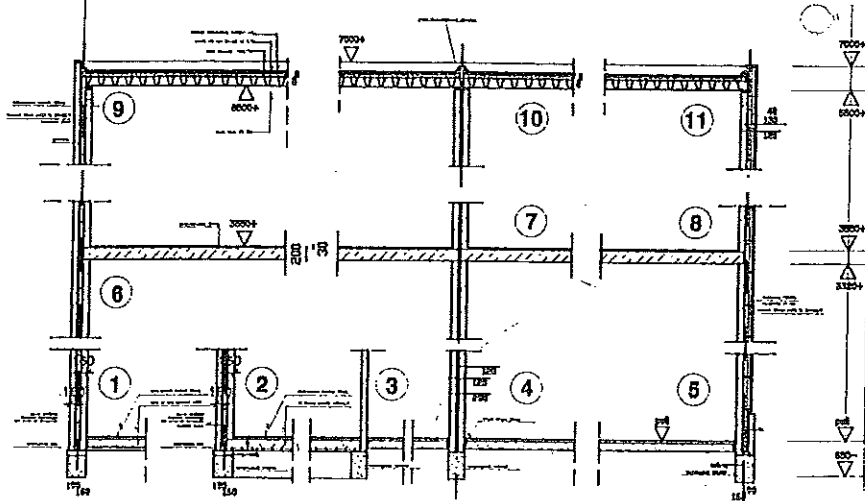
verdieping

3/2

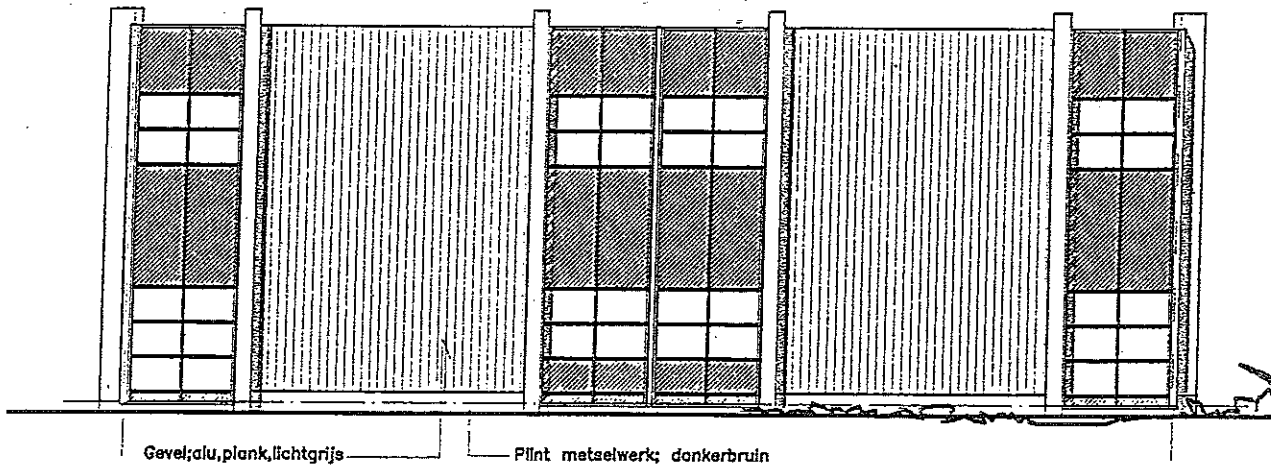


zuidgevel

Pfint metselwerk; donkerbruin
Gevelmetselwerk; rood
Kozijnen; hout, blauw
Ramen; hout, geel
Deuren; hout, geel
Panelen; glas, ondoorzichtig



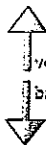
dwarsdoorsnede



Gevel; alu, plank, lichtgrijs

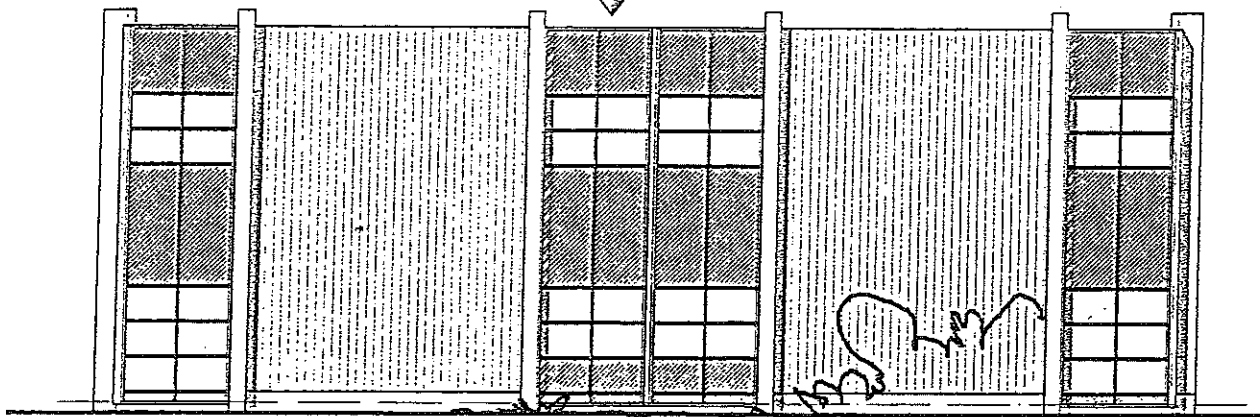
Pilnt metselwerk; donkerbruin

westgevel



voor oost- en westgevel ;

brandverende beglazing toepassen ! (30min.)



oostgevel